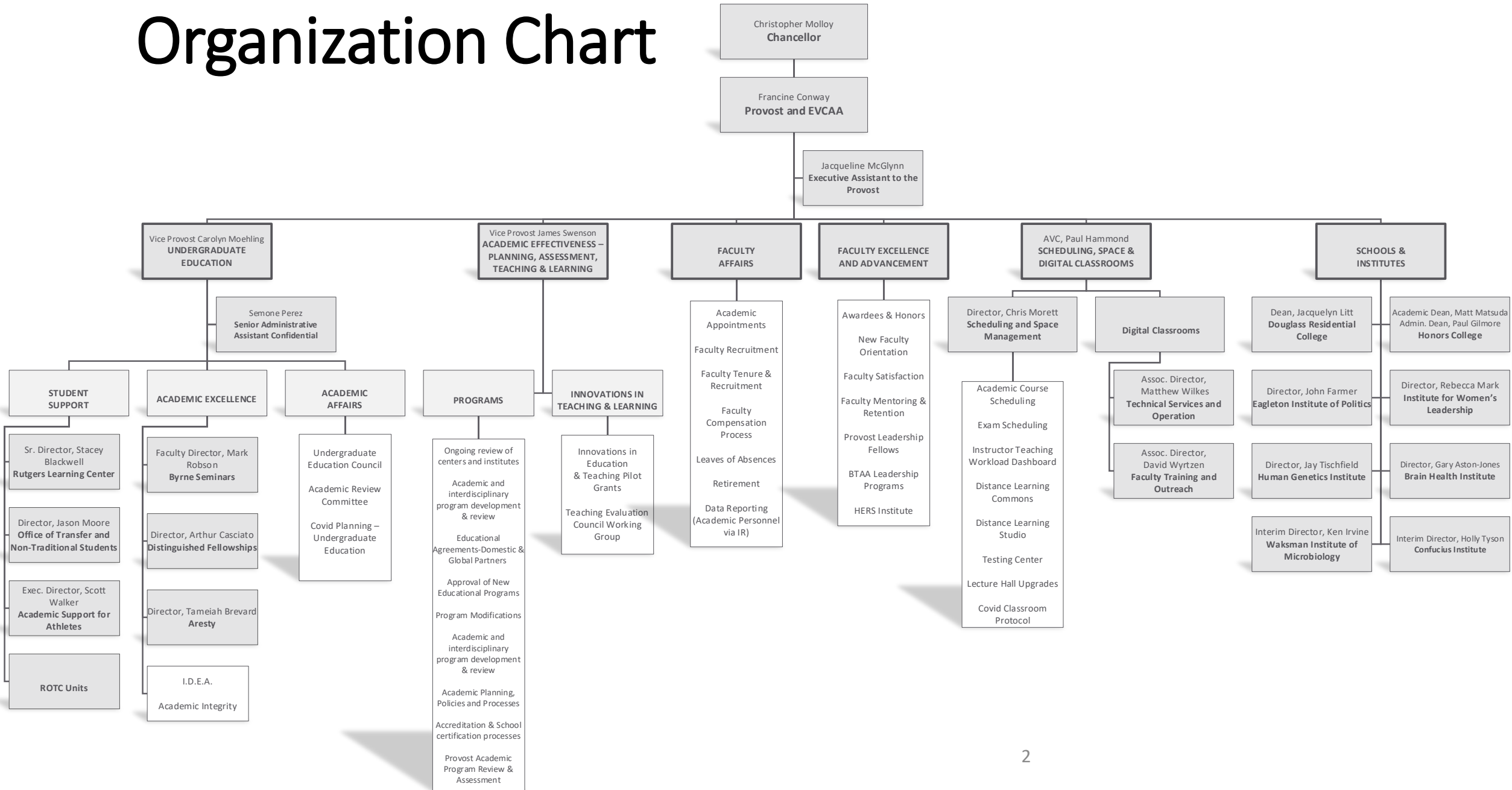


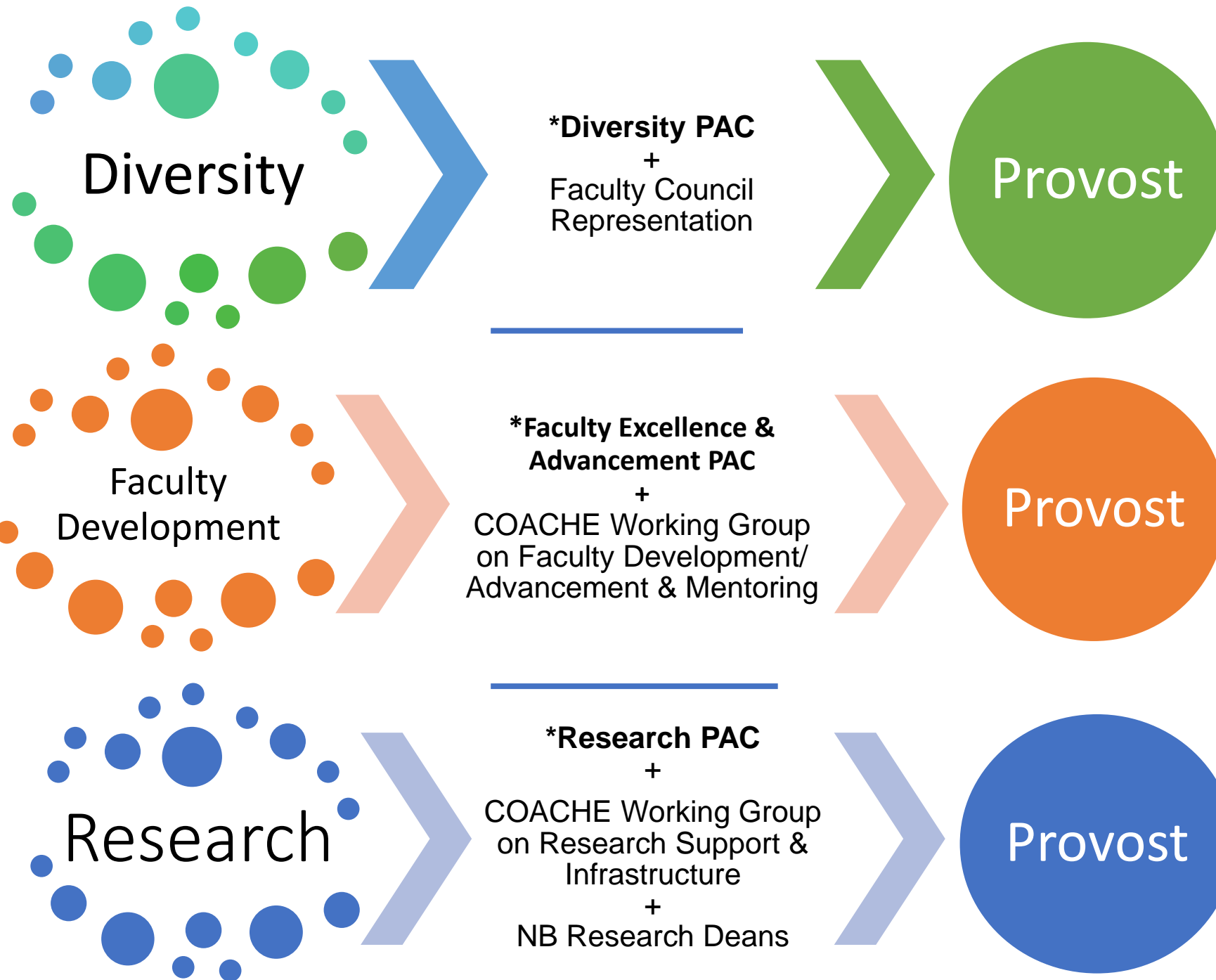
# Provost Office Organization

Fran Conway

Executive Vice Chancellor of Academic Affairs & Provost

# Organization Chart





Diversity

\*Diversity PAC  
+  
Faculty Council  
Representation

Provost

Faculty  
Development

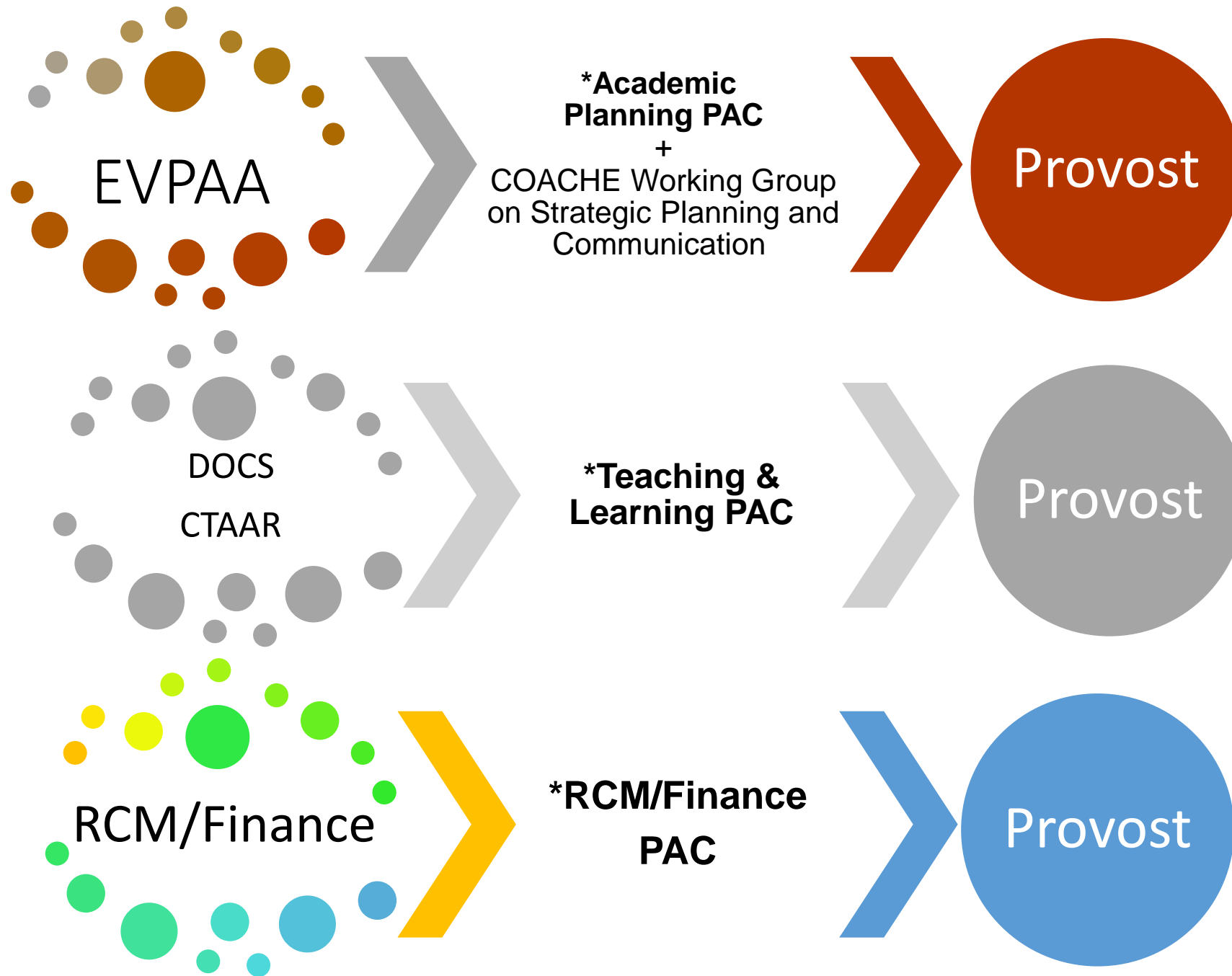
\*Faculty Excellence &  
Advancement PAC  
+  
COACHE Working Group  
on Faculty Development/  
Advancement & Mentoring

Provost

Research

\*Research PAC  
+  
COACHE Working Group  
on Research Support &  
Infrastructure  
+  
NB Research Deans

Provost



# Logic Model

## Input

- Deans 6-PAC
  - Diversity & Inclusion
  - Faculty Excellence & Advancement;
  - Research;
  - Teaching & Learning;
  - Academic Masterplan;
  - Resource Planning
- Faculty Council & COACHE Faculty Working Groups
  - Research Support & Infrastructure
  - Faculty Development & Mentoring
  - Strategic Planning & Communication
- President's Office
  - SVPEE: NB-Diversity Inclusion Community Engagement (DICE)
  - EVPAA: Faculty Development, Research, Academic Planning
  - DOCS/CTAAR; RCM-Refresh/Finance

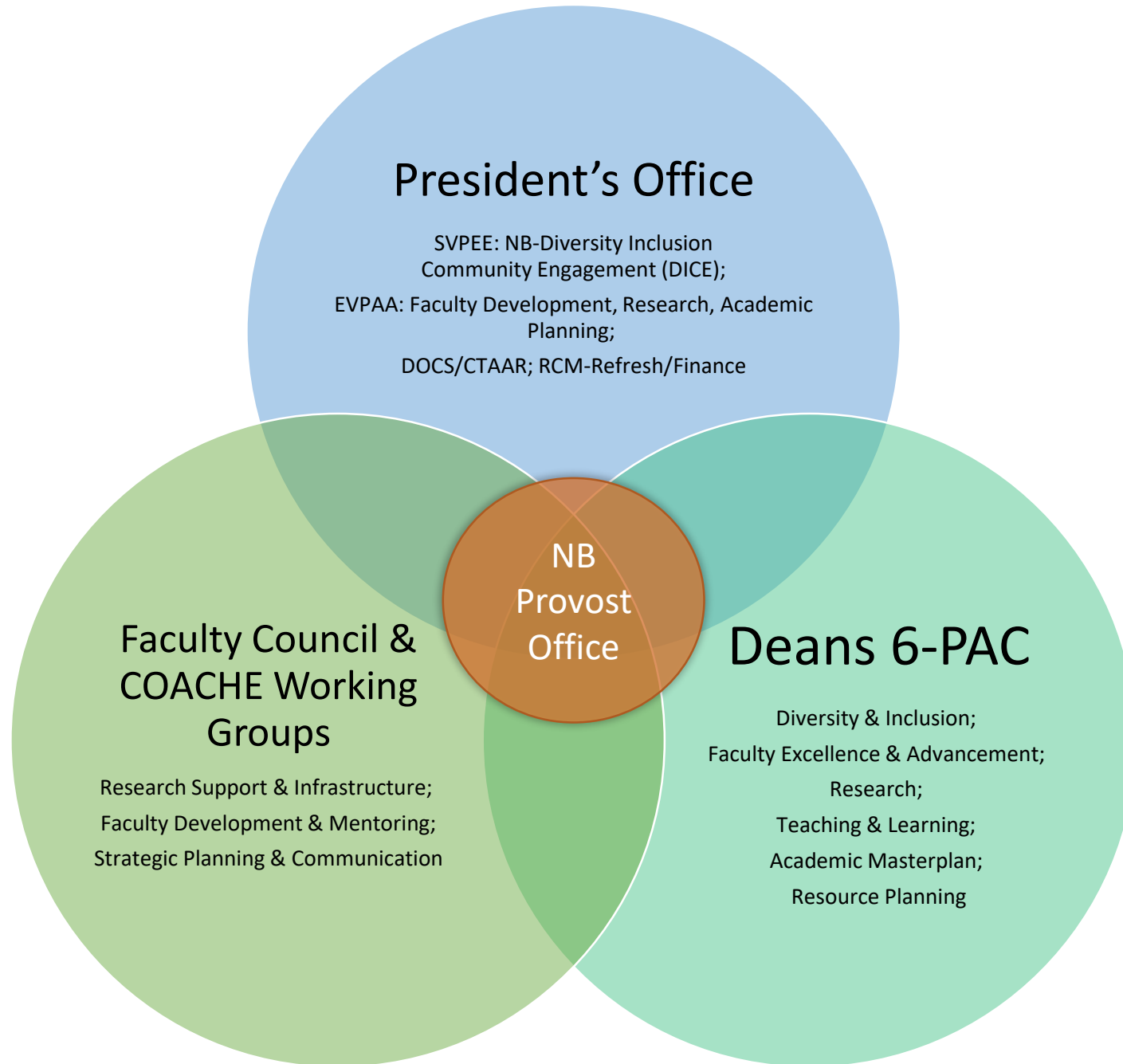
## Output

- Diverse and successful academic community
- A career advancement and mentoring plan that builds success in research and teaching innovation
- A clear strategy and resources for research success
- To provide guidance in accordance with university policy on academic initiatives and coordinate educational efforts across the schools
- NB will be a leader in offering world class and nationally ranked academic programs in critical areas.
- Alignment of resources with academic plan

## Outcome

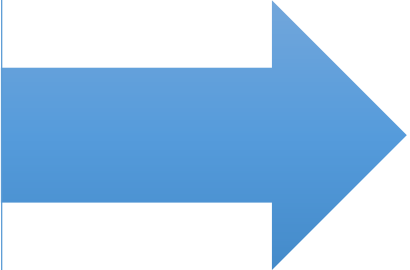
- To foster a sense of belonging in our beloved community through inclusive excellence, support of diverse faculty's progression in their academic careers, and recognition of scholarly achievements and creative work.
- To recognize and celebrate faculty excellence in research, teaching, and service, and provide support to advance faculty innovation in their scholarly and creative work, professional development and projects that promote inclusion.
- To develop strategic university-wide collaborations to coordinate and facilitate excellence in research for faculty and students.
- To support and advance a culture of excellence in teaching and learning.
- An academic master plan that delineates a plan and strategies to accomplish the academic mission.
- Increased collaboration and transparency with university partners and units to resource academic and strategic planning and to ensure appropriate facilities to perform academic tasks.

# Input





# Output

- Diverse and successful academic community
  - A career advancement and mentoring plan that builds success in research and teaching innovation
  - A clear strategy and resources for research success
  - To provide guidance in accordance with university policy on academic initiatives and coordinate educational efforts across the schools
  - NB will be a leader in offering world class and nationally ranked academic programs in critical areas.
  - Alignment of resources with academic plan
- 

# Outcomes

